



European Medical Information Framework

Bart Vannieuwenhuyse
September 2017



Project overview



ACADEMIC PARTNERS 38



📍 **14** European countries
 combining **58** partners
€56 million worth of resources
3 projects in one
5 year project
 (2013 – 2017)



SME PARTNERS 9



EPPIA PARTNERS 10



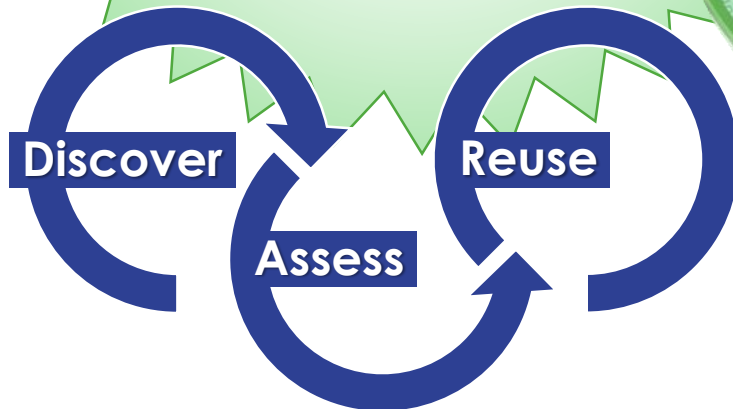
PATIENT ORGANISATION 1



Our vision



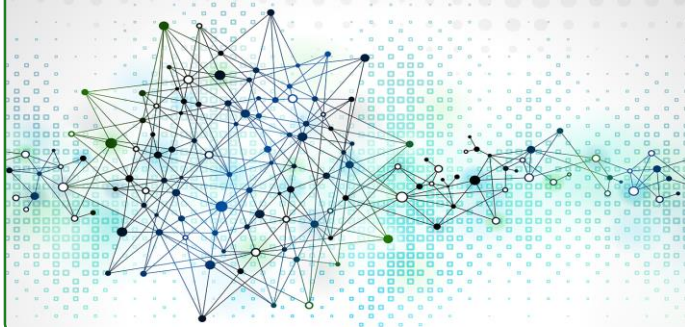
To become the trusted European hub for health care data intelligence, enabling new insights into diseases and treatments



Project objectives



EMIF-Platform



Develop a framework for evaluating, enhancing and providing access to human health data across Europe, support EMIF-Metabolic and EMIF-AD (the specific topics below) as well as support research using human health data in general



EMIF-Metabolic



Identify predictors of metabolic complications in obesity



EMIF-AD



Identify predictors of Alzheimer's Disease (AD) in the pre-clinical and prodromal phase

Realising the Value from Health Data ~ Improving Care and Research

September 21-22, 2017

MADRID, SPAIN

JOINT EVENT



The European Institute of
Innovation Through Health

i+12

Instituto de Investigación
Hospital 12 de Octubre



iHD Annual Conference

09:15	<p>Research Use Cases – what have we learned? Simon Lovestone, Professor of Translational Neuroscience, University of Oxford, UK</p> <ul style="list-style-type: none"> • Metabolic Bart Vannieuwenhuysse, Janssen, European Medical Information Framework (EMIF) • Alzheimer's Disease Pieter Jelle Visser Vu University Medical Center • Cross Topic Peter Egger, Senior Director, Real World Evidence and Epidemiology, GSK, UK
11:00	COFFEE BREAK
11:30	<p>New opportunities for scaling up big data research Dipak Kalra, President of iHD</p> <ul style="list-style-type: none"> • The European Research arena – A Study Tine Lewi, Janssen & Omer Saka, Deloitte • Citizen Generated Data Alison Bourke, QuintilesIMS Real-World Insights • The trustworthy scaling of big data research Dipak Kalra, President of iHD
13:00	LUNCH and visit to the info booths
14:00	<p>Data Harmonisation & Novel Data Reuse Peter Rijnbeek, Assistant Professor, Erasmus University Medical Center, The Netherlands</p> <ul style="list-style-type: none"> • Observational Medical Outcomes Partnership (OMOP), Common Data Model (CDM) and Observational Health Data Sciences and Informatics (OHDSI) Peter Rijnbeek, Assistant Professor, Erasmus University Medical Center, The Netherlands • EMIF and Data Custodians experience with Observational Medical Outcomes Partnership (OMOP), Common Data Model (CDM) mapping in Europe Michel Van Speybroeck, Director of Data Sciences, Janssen, Belgium • Working with cohorts: Switchboxes & Knowledge Objects Rudi Verbeeck, Senior R&D Manager, Janssen, Belgium • Placebo Data as a surrogate for RWD Gurparkash Singh, Principal Scientist, Janssen Research and Development, US Peter Egger, Senior Director, Real World Evidence and Epidemiology, GSK, UK
15:30	COFFEE BREAK
16:00	<p>Panel Discussion Nigel Hughes, Scientific Director of Real World Evidence, Janssen, Belgium & Selected Speakers</p> <ul style="list-style-type: none"> • What have we learned from EMIF in support of health data research? • What is the future beyond EMIF?
17:30	<p>Closing Statement & End Simon Lovestone, University of Oxford & Bart Vannieuwenhuysse, Janssen, European Medical Information Framework (EMIF)</p>

More Information



• EMIF general

- Bart Vannieuwenhuysen (bvannieu@its.inj.com)
- Simon Lovestone (simon.lovestone@psych.ox.ac.uk)
- Johan van der Lei (j.vanderlei@erasmusmc.nl)

• EMIF-Platform

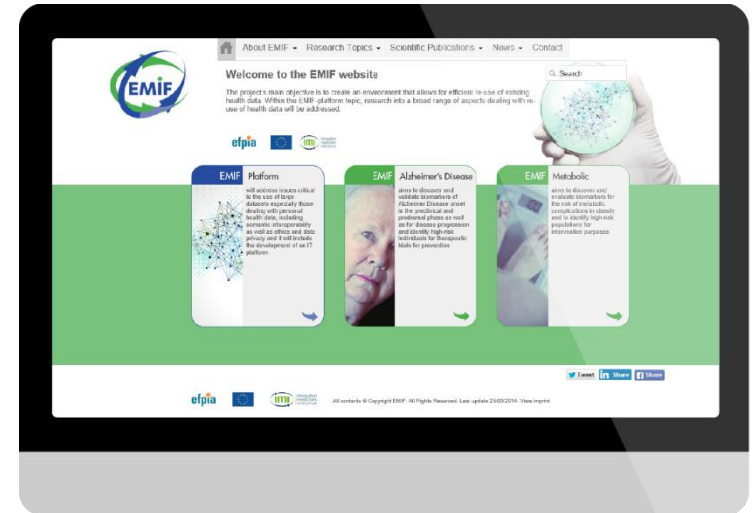
- Johan van der Lei (j.vanderlei@erasmusmc.nl)
- Nigel Hughes (nhughes@its.inj.com)

• EMIF-Metabolic

- Ulf Smith (ulf.smith@medic.gu.se)
- Dawn Waterworth (dawn.m.waterworth@gsk.com)

• EMIF-AD

- Pieter Jelle Visser (pj.visser@maastrichtuniversity.nl)
- Johannes Streffer (jstreffe@its.inj.com)



www.emif.eu

Register for our newsletter!

EMIF is operating under IMI Grant Agreement n°115372